



North Willamette Valley
Habitat
for Humanity®

Build Repair Reuse

Annual Report 2013

North Willamette Valley Habitat for Humanity Board of Directors

Aaron Huddart, Board Chair
Carl Menkel, Past Chair
Clyde Hockman, Secretary
Ken Spiegle
Marcy Sterling
Anedelia Vasquez
Larry O'Dea
David Gerstenfeld
Jan Milne



2013 was a year of major transition and growth for NWV Habitat that included several staffing changes as well as the addition of a Donations Coordinator for our ReStores. We dedicated our first two homes in Molalla with great support from local businesses and community members. Five NWV Habitat representatives traveled to Cambodia to build Habitat homes alongside volunteers from all over the world. The Canby ReStore repeatedly broke sales records and outperformed our wildest expectations, bringing in sustainable funding for building more homes and serving more families. One of the biggest changes NWV Habitat saw in 2013 was the development of our ReHabitat Home Livability Program, designed to serve low-income homeowners in need of critical repairs. This program will allow us to serve more families across our service area while better serving our vision of a world where everyone has a decent place to live.

A handwritten signature in black ink, appearing to read 'Katy Zilverberg'.

Katy Zilverberg, NWV Habitat Executive Director



Becky & Charley Slate at their home dedication in Molalla, April of 2013.



Founded with the vision and energy of Ivo Bauman in 1986, North Willamette Valley Habitat for Humanity is the second of 32 affiliates established in Oregon. In the last 27 years, 39 homes have been constructed by volunteers and purchased by local Habitat families serving the communities of Scotts Mills, Woodburn, Mt. Angel, Silverton, Gervais, Canby, Molalla, Aurora, and Hubbard. The 40th and 41st homes are being built in Gervais. In addition, NWV Habitat has built 60 homes overseas for a total of over 100 families served!

Our Mission

Seeking to put God's love into action, Habitat for Humanity brings people together to build homes, communities and hope.



**North Willamette Valley
Habitat
for Humanity®**

ABOUT

PO Box 852
225 Franklin St.
Mt. Angel, OR 97362

Phone: 503-845-2434
Fax: 503-845-9408

www.nwvhabitat.org

Build



2013 Build Dedications in Molalla

Our first builds in Molalla, the Beteran family (above) received the keys to their new home at their dedication on April 29, 2013. They are neighbors with the Slate family (below) who had their home dedicated on the same day. Both families worked hard to fulfill their sweat equity hours and realize the dream of homeownership.



Groundbreaking in 2013 in Gervais

Ground broke on the Snegirev house, our 40th build, in Gervais in June 2013. The family of seven moved into their home in 2014.

We also began our first rehabilitation for a Habitat partner family in 2013. A former Habitat home, this house in Gervais received new flooring, cabinets, appliances, heating system, vanities, paint and more for the Cruz-Bautista family. The rehabilitation work completed in 2014, and the family became our 41st partner family.



Repair

The vision of NWV Habitat is that everyone has a decent place to live. In July the Board of Directors authorized the establishment of the ReHabitat Home Livability Program, a loan repairs program to assist current homeowners in making critical repairs to their home. We recognized that new home builds can not eliminate poverty-housing in our communities, and that it is just as important to work with homeowners to preserve existing housing stock.

Costs for the loan repairs program are kept low by using donated supplies and volunteer labor (when applicable). Depending on a families income, repayment of the repair loan can be as low as 20% of the cost of the project at 0% interest. To qualify for the ReHabitat Home Livability Program families must fall under 60% of the area median income for their county, must own their home, be current on their property taxes and homeowners insurance, and live within our service area of north Marion and south Clackamas counties.

ReHabitat projects can include repairs to roofs, siding, and exterior stairs; replacement of windows, furnaces, water heaters, adding insulation to a home and more.



Long-time construction crew volunteer, Dick Hansen, prepares to put siding up on a partner family home.



Reuse



The Mt. Angel and Canby ReStores sell reusable and surplus materials to the public at a discounted price. Excellent quality merchandise at an affordable cost! Individuals, contractors, and businesses can make a tax-deductible donation of used or surplus items to the ReStores. Donations are accepted during business hours, or pick-up of items can be scheduled by calling 1-855-500-4161.

Highlights:

- In 2013, both stores cumulatively grossed \$245,674 in sales which equates to 921,278 pounds, or 461 tons, of potential waste diverted from local landfills.
- The Canby ReStore celebrated its one year anniversary in October.
- A Donations Coordinator was hired, and a new donations box truck purchased.

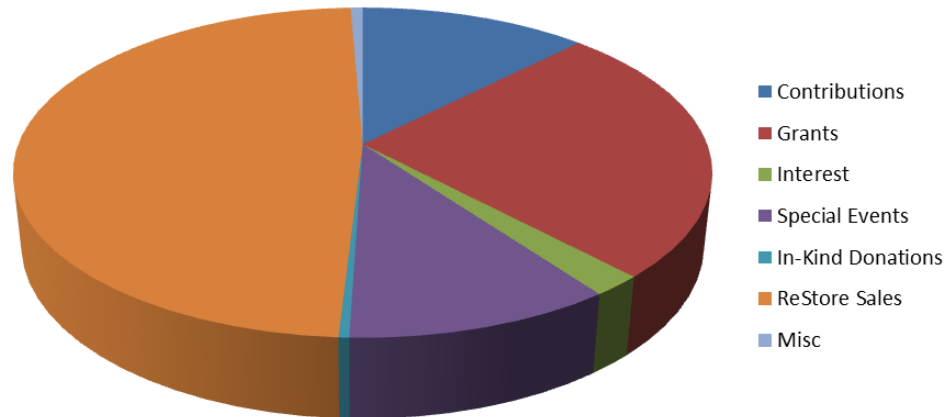
NWV Habitat Highlights for 2013

- Five representatives were sent to Cambodia where they helped build an apartment as part of the Mekong Big Builds.
- Took on our first major home remodel project in Gervais.
- Completed our affiliate's first two home builds in Molalla.
- Hired a Donations Coordinator for the ReStores.
- Created a ReHabitat Home Livability Program to assist low-income homeowners through a low-cost home repairs loan program.

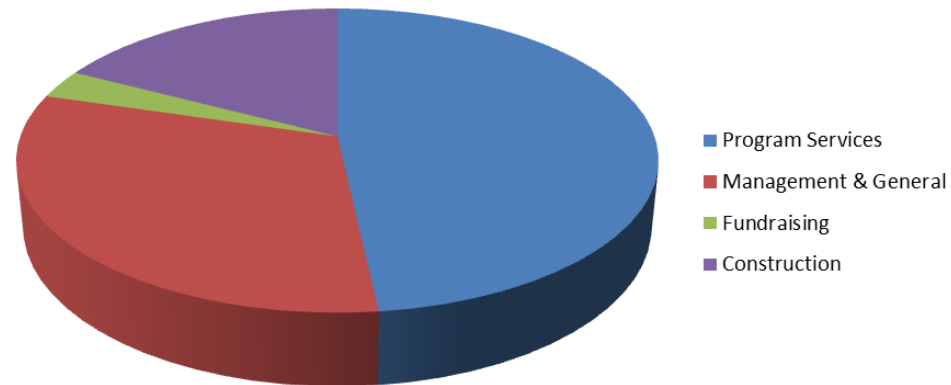


NWV Habitat Financials for 2013*

Income Categories



Expense Categories



*Full financials are available upon request.

Become a ***Building Partner*** in our NWV Habitat Carpenters Club

We have built homes with forty-one partner families, completed our first repairs project, and opened two ReStores all thanks to the generous support of donors like you! By **joining** the **Carpenters Club**, for as *little as \$10 a month*, you will become a ***Building Partner*** who supports our construction crews throughout the year with regular monthly gifts.

For you, this won't involve working long hours on the construction site like our staff and volunteers. But, as their partner, you will be playing a crucial role in ensuring that hardworking low-income families have a decent roof over their head.

When you join the **Carpenters Club** as a ***Building Partner*** your sustaining monthly gift will strengthen our efforts to *eliminate poverty housing* in the communities of Mt. Angel, Woodburn, Silverton, Canby, Molalla, Hubbard, Aurora, Gervais, and Scotts Mills. It will also help NWV Habitat prepare for tomorrow's housing needs and help us sustain programs like our critical home repairs. As you hear about families served through our new construction or home repairs program you will know that your money is already hard at work, helping us to provide families with one of the basic human needs, ***shelter***.

In a time when many things are uncertain, **Carpenters Club *Building Partners*** are our most highly valued supporters. As a ***Building Partner***, you assure our staff and volunteers that they can count on your support so they can continue their hard work of building and repairing for our families. Year after year, thanks to the sustained generosity of supporters like you, new families will be able to say they have a safe and decent place to live!

How can I become a NWV Habitat monthly Building Partner?

1. Visit us online at www.nwvhabitat.org and click on the "donate" button.
2. Call our Resource Development Director at 503-845-2177 to sign up.
3. Email our Resource Development Director at bfaulhaber@nwvhf.org to sign up.



Carpenters Club